

COREY'S SUBDIVISION

BRINKER & HOCHSTETLER'S SUBDIVISION

IN OGDEN CITY

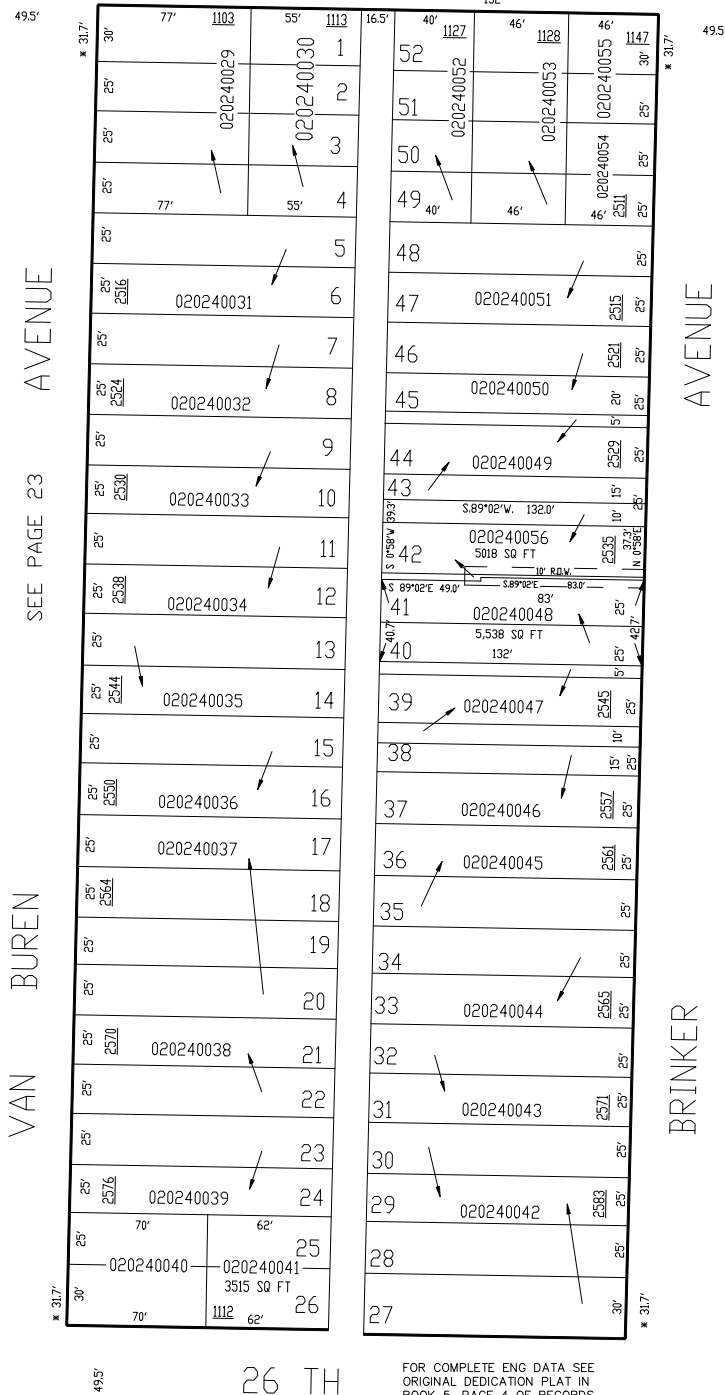
SCALE 1" = 50'

TAXING UNIT: 25

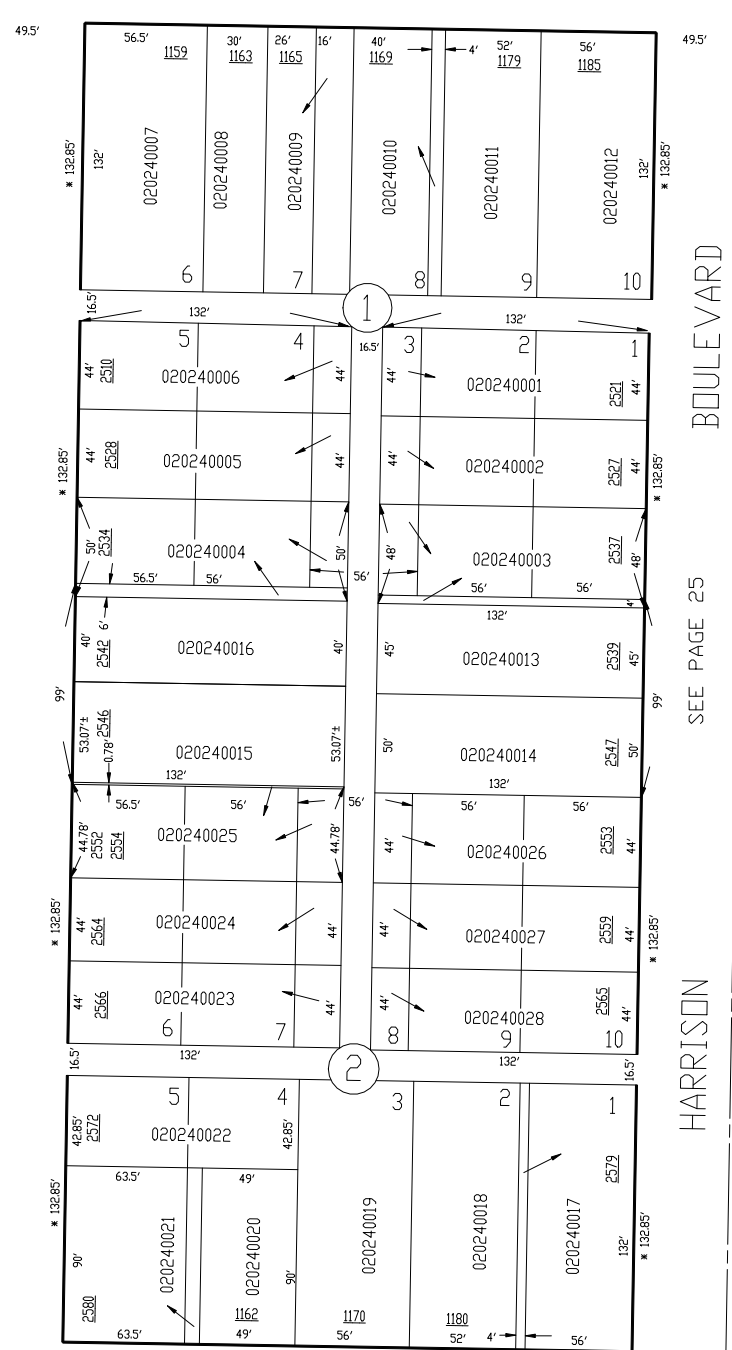
25 TH

ST.

SEE PAGE 27



FOR COMPLETE ENG DATA SEE
ORIGINAL DEDICATION PLAT IN
BOOK 5, PAGE 4 OF RECORDS.



SEE PAGE 19

STREET

FOR COMPLETE ENG DATA SEE
ORIGINAL DEDICATION PLAT IN
BOOK 2, PAGE 7 OF RECORDS.

* NOTE: OGDEN CITY ENG. DEPT PLAT SHOWS DATA.

JPS 8-95